

## Grow Education Partners > School Support > 2021 -2022

A close-up photograph of a person's hands holding several small, white cards. The cards are being held over a larger document that has a list of terms. The terms visible on the document include "Clear priorities", "Group spirit", "Trust", "Experience", and "Commitment". The person is wearing a dark long-sleeved shirt and a metal watch on their left wrist. The background is slightly blurred, showing a desk and other documents.

# grow



To find out more about how we can help you with any training and support needs, please [click here](http://www.grow-education.org) to visit our website at:  
[www.grow-education.org](http://www.grow-education.org)



## Grow Education Partners > School Support > 2021 -2022

On behalf of [Grow Education Partners](#) I would like to thank you all for your dedication, flexibility and continued focus on delivering high-quality teaching, learning and support for your school communities this year. It has been a privilege to work with so many of you as we have all adapted to new ways of working.

As we begin the Summer term, we will continue to retain the positives that have emerged from the pandemic, including the ability to use School Improvement days for CPD, already greatly appreciated by many school leaders. We also understand how the ongoing costs of the pandemic are placing schools under further financial strain. Therefore, **we have fixed the pricing for our [School Improvement packages](#), [HR Support](#), [Leadership Programmes](#) and [training courses](#) at 2019 - 2020 levels\***.

Furthermore, in line with our Data Protection Support package, all [HR training sessions](#) will now be included for **free** when you sign up for our HR Support package. In addition to providing more flexible training times, we will continue to offer a wide range of aspects to support you and the your whole staff team over the coming year. This includes the extension of our popular Headteacher Coaching circles, a focus on equality and diversity, Adult Mental Health First Aid, the new EYFS Framework and financial planning.

As we continue to be flexible to your needs, we will maintain an up-to-date list of our training programmes and course dates on our website. In the meantime, we hope this interactive document provides a handy reminder of the support options we offer, with some helpful links to further details at [www.grow-education.org](http://www.grow-education.org).

We look forward to continuing our partnership and supporting you by extending our range of services during the coming year. Once again, I would like to thank you all for your continued support.

Helen Ridding / Grow Education Partners

\* Except our Data Protection Support package, which has seen a small price increase in order to service the growing number of schools we work with and the larger team required.

### Click for information about...

School Improvement 

Human Resources 

Data Protection 

Professional Development 

Booking & Ordering 

“

*The level of leadership support received has always been of a very high standard, especially in terms of reviews, performance management and realising your own vision for the school.*

To find out more about how we can help you with any training and support needs, please [click here](#) to visit our website at:  
[www.grow-education.org](http://www.grow-education.org)

# School Improvement Packages & Support Add-ons

We are passionate about helping schools be the best that they can be. Whatever your school's context or individual development needs, our School Improvement packages and Support add-ons can be flexibly tailored to ensure the highest level of expertise, advice and guidance.

## Packages

Our School Improvement packages provide guidance from a dedicated Grow adviser to help you achieve better outcomes for your school. Through a bespoke programme of annual visits and agreed areas of focus, we will work with you to identify, plan and implement key priorities in order to drive school improvement.

We will operate as part of your team, but will maintain an 'external' viewpoint in terms of analysis and advice – critical when judging the best course of action.

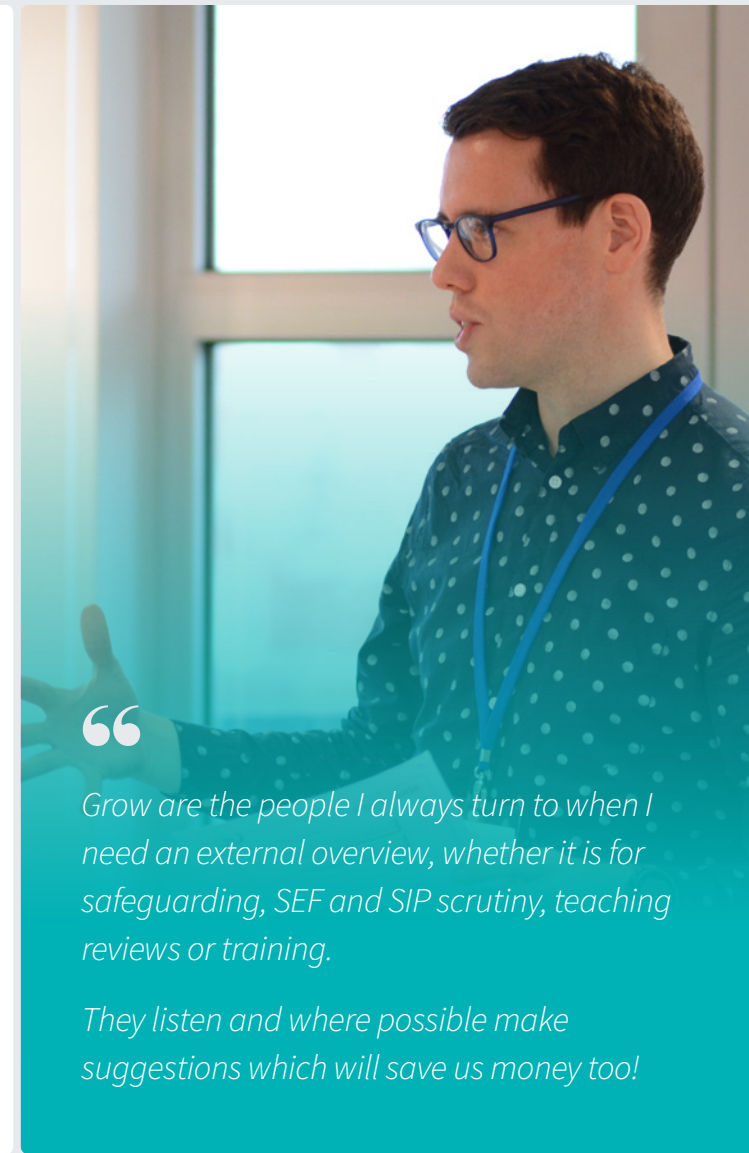
Package	Days per year	Cost
Oak	3	£1950
Beech	6	£3600
Cedar	12	£6550

\* Please note: All prices are shown excluding VAT.

## Support add-ons

Alongside your annual support package, you can also opt for our support add-ons, giving you full flexibility in facing the challenges of an ever-changing educational landscape. These can be included as part of your existing package if time allows, or purchased separately.

- **External focus review:** providing leaders with external, bespoke reviews of chosen aspects
- **Headteacher Coaching Circles:** providing leaders with ongoing peer-reviewed support and guidance
- **Headteacher appraisal:** providing the services of an experienced Grow Education performance manager
- **Governance:** Helping governing boards identify existing strengths and areas for future improvement



“

*Grow are the people I always turn to when I need an external overview, whether it is for safeguarding, SEF and SIP scrutiny, teaching reviews or training.*

*They listen and where possible make suggestions which will save us money too!*

To learn more about our school improvement packages & support add-ons, please [click here](https://www.grow-education.org/school-improvement) to visit:  
[www.grow-education.org/school-improvement](https://www.grow-education.org/school-improvement)



# Human Resources Support



We bring a range of experience in local authority and education sector HR, offering you focused advice and support, coupled with a personalised approach, to ensure that the right practical solutions are put in place for you and your staff.

## Expertise

Our overall aim is to help you embed good and lasting HR practices. We can help you manage your human resources administration to overcome any HR challenges you may face.

Our flexible and cost effective HR Support package provides detailed advice and guidance in all aspects of employment across the education sector - including **parental complaints, governor HR hearings, pay appeals, negotiation, discipline and grievance, capability, mediation**, and much more.

Costs are dependent on school group size:

**Primary:** From **£850** to **£2380**

**Secondary:** **£5780**

\* Please note: All prices are shown excluding VAT.

## New for 2021 - 2022

- Free access to our focused HR training courses
- Discounts for multi-academy trusts of 4 or more schools

We have preferred suppliers for payroll, Occupational Health and absence insurance who provide schools with a discounted rate for their services.

We can also support your school with:

- Investigations
- Preparations of contract of employment
- DBS checking and countersignatory service

“

*Our HR adviser has gone over and above to assist us this year, brokering extra support through her wider Grow contacts which has really helped us with a staffing situation.*

*The guidance, time and dedication provided by the HR team is invaluable.*

For further information about our HR Support package, please [click here](https://www.grow-education.org/hr) to visit:  
[www.grow-education.org/hr](https://www.grow-education.org/hr)





# Data Protection Support

Our Data Protection team currently provides data protection and privacy guidance, advice, training and support to over 200 schools across Greater London, helping them to meet their statutory obligations.

## Expertise

Our comprehensive Data Protection Support package has been tailored to offer you complete peace of mind, allowing you to focus on your core role. Provided by qualified Data Protection Officers, it is overseen by our Head of Data Protection to ensure we provide a consistent approach across all schools.

Your link Data Protection Officer will assess and advise on your school's data handling processes, while providing ongoing data protection and privacy-related guidance throughout the year.

Our pricing has been aligned to correlate with the academic year:

<b>September 2021 to August 2022:</b>	<b>£1175</b>
---------------------------------------	--------------

\* Please note: All prices are shown excluding VAT.

## Continuing for 2021 - 2022

- Support with up-to-date reports, information sheets, training and telephone & email advice
- Development of policies and procedures to regulate processing of personal data
- Advice on how to interact with external bodies, regulatory authorities, data subjects and information seekers
- Free access to our focused Data Protection training courses
- Discounts to multi-academy trusts of 4 or more schools

Should you feel you require additional support in this area, we can help with our bespoke support options.



*Grow offered the best value data protection service and right from the start, instilled confidence with sound, practical advice.*

*Thank you for adapting so quickly to the lockdown and for carrying out a virtual review of our documentation and procedures.*

*Your advice and expertise has been very welcome this year and we will definitely be signing up for next year.*

To learn more about our Data Protection Support package, please [click here](https://www.grow-education.org/data-protection) to visit:  
[www.grow-education.org/data-protection](https://www.grow-education.org/data-protection)



# Professional Development & Training Courses

We understand the importance of ongoing professional development for school leaders and staff. Our training courses support all levels of experience across a range of aspects, so that your whole team can provide the best for your pupils.

## Leadership Programmes

Our popular leadership programmes range from 3 to 6 days and are designed to cater for teachers at all stages of their career.

It is a testament to their success that a high proportion of school leaders return to complete the 'next stage' programme.

## Early Career Framework

We are working closely with trusted partners to provide training from September 2021 in line with the requirements of the Early Career Framework.

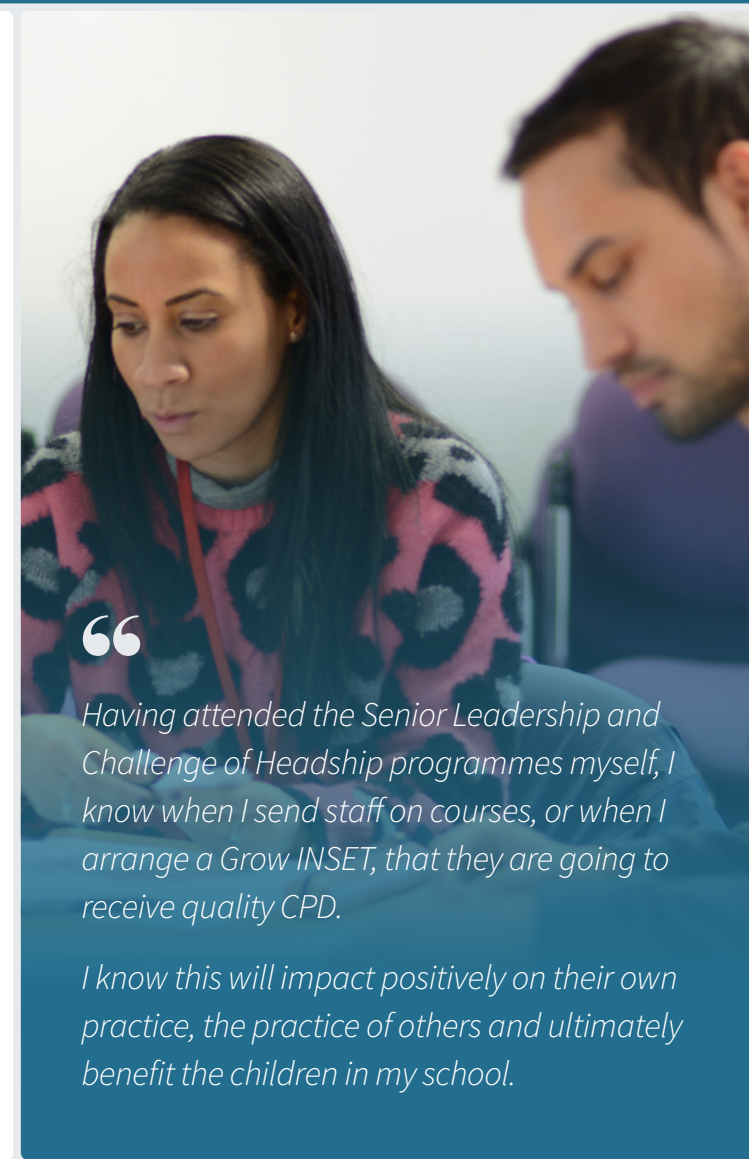
Our offer is likely to cover the five key areas to ensure development of the vital skills and strategies required to support early career teachers and their mentors.

## Short Courses

We provide a blended approach to meet your needs. From after-school sessions to whole-day courses, we can support you in delivering high quality education in your school.

Topics include:

- School self-evaluation and subject leadership
- Updates on statutory requirements
- The wider curriculum
- Equality and diversity
- SEND
- Safeguarding and well-being
- Specific focus for CE schools
- HR and Data Protection



“

*Having attended the Senior Leadership and Challenge of Headship programmes myself, I know when I send staff on courses, or when I arrange a Grow INSET, that they are going to receive quality CPD.*

*I know this will impact positively on their own practice, the practice of others and ultimately benefit the children in my school.*

For the latest information on our training courses & programmes, please [click here](https://www.grow-education.org/training) to visit:  
[www.grow-education.org/training](https://www.grow-education.org/training)



# Booking & Ordering

To place an order, or to make a booking with us, you will first need to [register your school](#). Once we have confirmed your registration you will be able to securely place, update and keep track of your orders through our website.

## For details, please visit...

- [Booking & Ordering](#) › How to order a support package, book a course, and how to check out
- [Terms & Conditions](#) › Covering the ordering and booking process, discounts and concessions, cancellations and refunds, invoicing and payment

## If you can't find what you need...

Our website at [www.grow-education.org](http://www.grow-education.org) contains the latest up-to-date information about everything that we can help with, but if you can't find exactly what you're looking for then please feel free to call us on **020 7932 1175** to discuss your specific requirements.

## Covid-19 Impact

We will continue to build on our offer to best support you, remotely or in person, throughout this period. Due to the ongoing uncertainty however, we may make adjustments to some elements.

We have successfully shifted training to live online sessions and will continue doing so until it is safe to resume face to face training at [our venue](#): 36 Causton St, London SW1P 4AU.

We are always keen to provide training for cluster and local authority areas and can arrange a centralised training venue in your area.

We can also arrange in-school training if required.



“

*Grow Leadership Partners reinforced my leadership aims and delivered honest and knowledgeable feedback, which was grounded in a wealth of experience of schools and inspections.*

*The impact of their insightful observations in my school has been a swift change in teaching and learning strategies.*

*These changes over time will enable our children to thrive academically and improve their outcomes.*

For further information on booking, ordering and our full terms & conditions, please [click here](#) to visit:  
[www.grow-education.org/help-info](http://www.grow-education.org/help-info)

